

HKbIL[®] Company Profile



- HONG KONG BATTERIES MANUFACTORY LIMITED (III) FACTORY has been established since March,2005. The factory is located in Guan Lan Town Industrial Park Shenzhen city and covering more than 6,000 square meters. We have strong ability to design, development, joint-development, manufacturing, OEM, ODM and JDM. Because of well organized structure, compatible pricing and also the trustworthy quality system, we are able to land both European and US market within a short time. Meanwhile, all of our staff is establishing the infrastructure of ISO/TS16949:2002 quality management system which is advocated by our General Manager.





HONG KONG BATTERIES



Section I – Our Products



- Product Category



- OEM Product



- Products Road Map

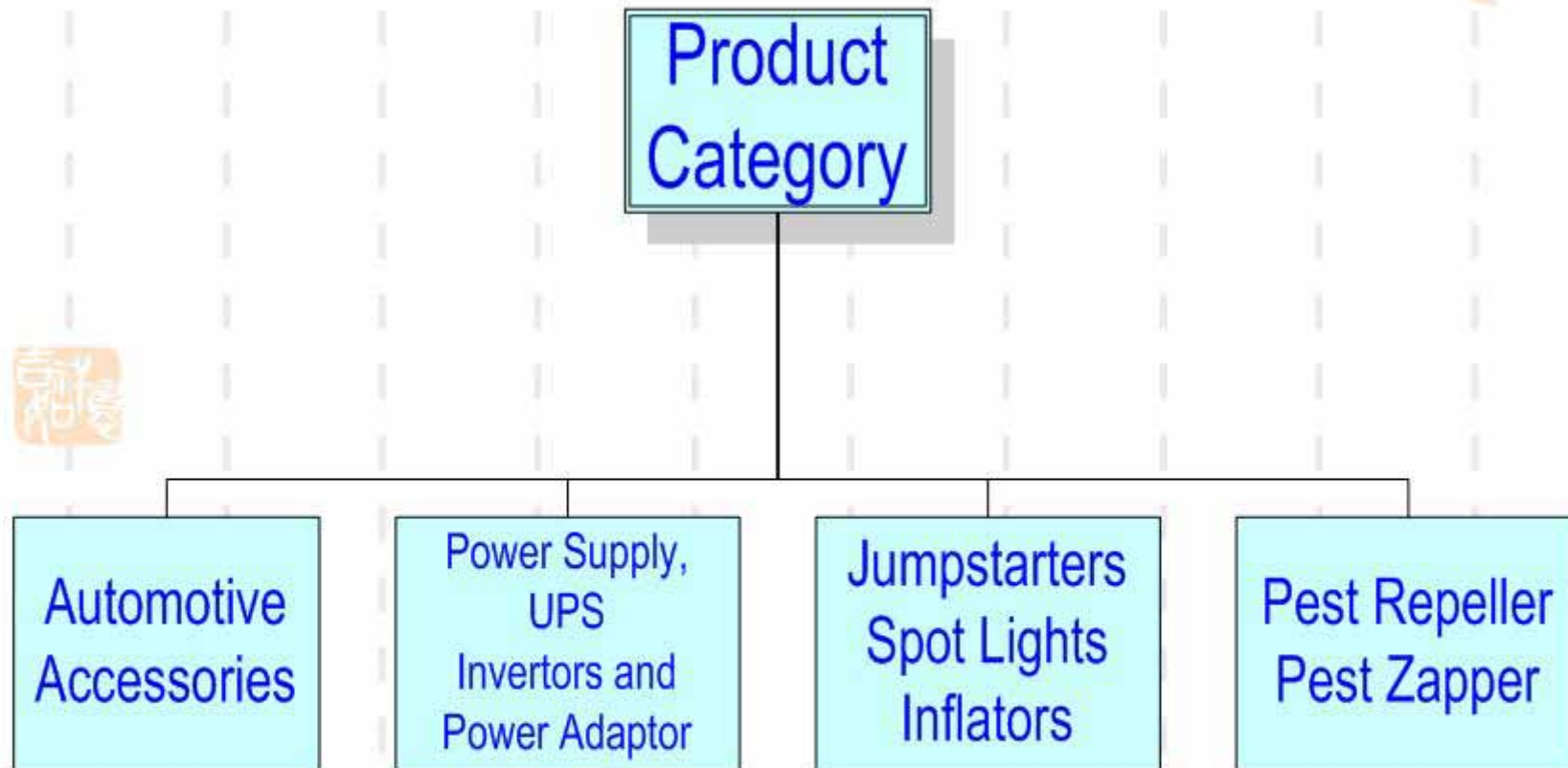


- Products Chain





Hong Kong Batteries Product Category





Product Category 产品介绍



We are specialized in automotive accessories , Inflator, inverter, jumpstarter, power adaptor, pest repeller and so on. The company have mould exploiting, finished assembly ,injection, power supply , wire process ,PCB insert piece and welding process and so on .



主要经营汽车启动器、充气泵、射灯、驱蚊器、變壓器, 汽車附件等产品, 公司拥有模具开发、成品组装、注塑、电源供应器、线材加工、**PCB**插件以及焊接加工等多条生产线。



Automotive Accessories



Model: MT005

Name: Mobile Signal Light Set

- 1. 11x1.2V1300mAh Ni-Cd battery
- 2. 12V DC socket
- 3. battery level tester
- 4. 36Xred LED flashing light
- 5. 12V5W light blub
- 6. ABS housing
- 7. 4 flashing features & light On
- 8. Two arms can be swivel to form a triangle
- 9. cigarette plug w/ LED, fuse & cable L: 70cm +/-10%
- 10. 1.5" reflective cup
- 11. 2 x Green LED (1 x indicate selected to charge, 1x indicate selected to work on red LEDs)

HKbIL[®] Automotive Accessories



Model: MT060

Name: hammer

- 1. safety hammer - twin headed
- 2. safety belt cutter
- 3. wall mount bracket
- 4. reflective warning decal
- 5. high impact ABS plastic housing



Compressor / Inflator



Model: CC2600

Name: Cordless Inflator

- 1. 250PSI inflator
- 2. 1MCP Spotlight
- 3. Power Bank
- 4. Battery level indicator
- 5. Front Light
- 6. Battery level indicator





Compressor / Inflator



Model: MT004

Name: 260 PSI compressor

- 1. 12V2.6Ah SLA battery
- 2. $\Phi 19$ piston compressor with 260psi plastic pressure gauge.
- 3. 12V DC socket
- 4. ABS housing
- 5. 12V 3W light blub w/ flashing feature
- 6. Cold cathode tube work light
- 7. AC/DC charging port
- Window Box Packaging





Compressor / Inflator



Model: MT004-1

Name: 260 PSI compressor

- Color Box Packaging





Compressor / Inflator



Model: MT047

Name: 260psi case compressor

- 12V DC POWER JACK
- 260PSI TIRE INFLATOR WITH 12V Car ADAPTER
- Includes 3 inflation adapters for a wide variety of tasks
- Power cord 12Ft
- Cigarette lighter socket
- Working light





Compressor / Inflator



Model: MT065

Name: 260psi tire sharp
compressor

- 1. $\Phi 19$ piston compressor with 260psi pressure gauge.
- 2. unwrapped inflator hose with L: 45cm +/-10%
- 3. PP housing
- 4. cigarette plug with cable L: 3m +/-10%



Jumpstarter



Model: IB2001/IB9001

Name: 5 in 1 Power Pal

- 1. Jumpstarter
- 2. 250PSI inflator
- 3. 75W inverter
- 4. Power Bank
- 5. Front Light
- 6. Battery level indicator
- 7. ETL certificate
- 8. Both US and Japan version





Jumpstarter



Model: MT037

Name: 10 Amp Jumpstarter

- 1. 2 x 12V DC Power Ports
- 2. 1.5W Fluorescent work lamps
- 3. 10AMP/Hour Jumpstarter w/ 400 Amps Positive (red) and Negative (Black) booster clamps w/ cable L:0.5m +/- 10%
- 4. Battery level tester
- 5. 2 x fluorescent work light
- 6. AC/DC charging port
- 7. 12V 10AH SLA Battery



Jumpstarter



Model: MT039

Name: 18 Amp Jumpstarter

- 1. 12V 18Ah SLA battery
- 2. 4W fluorescent worklight x2
- 3. PP housing
- 4. AWG #4 red (+ve) & black(-ve) power clamp w/ power cord L:60cm +/-1)%
- 5. 12V DC socket x2
- 6. On/off switch for jumpstart
- 7. On/off switch for compressor
- 8. AC/DC charging port
- 9. battery level tester
- 10. $\Phi 19$ piston compressor w/ 260PSI plastic pressure gauge w/ wrapped hose L: 55cm +/- 10%





Jumpstarter



Model: PMJ7274COM1

Name: All Weather
Jumpstarter





Jumpstarter



Model: PMJ8160

Name: 18 Amp
Jumpstarter with
Compressor





Inverter



Model: MT026

Name: 95W plug inverter

- 1. Continue power output rate: 75W
- 2. High surge power: 150W
- 3. Overload output power (3~4secs): 75W + 5%~25%
- 4. Stand-by current: 0.15A
- 5. Input DC voltage range: 11V~15VDC
- 6. Output voltage range: 117V +/- 10%
- 7. Maximum outer shell temperature: 75°C
- 8. Power efficiency: over 80%
- 9. High voltage protection: 16V +/- 0.5V
- 10. Low voltage protection 10V +/- 0.5V
- 11. Low voltage alarm: 10.5V +/- 0.5V
- 12. Short circuit protection



Inverter



Model: MT026CP

Name: 95W plug inverter

- Club Pack Packaging





Inverter



Model: MT030

Name: 800W plastic inverter

- 1. Continue power output rate: 800W
- 2. High surge power: 1600W
- 3. Overload output power (3~4secs): 800W + 5%~25%
- 4. Input DC voltage range: 11V~15VDC
- 5. Output voltage range: 117V +/- 10%
- 6. LCD display DC, AC and Watt
- 7. Maximum outer shell temperature: 75°C
- 8. Power efficiency: over 80%
- 9. High voltage protection: 16V +/- 0.5V
- 10. Low voltage protection 10V +/- 0.5V
- 11. Low voltage alarm: 10.5V +/- 0.5V
- 12. Built-in fuse: 40A x2
- 13. 110V 60Hz AC socket x2



Inverter



Model: MT028

Name: 200W plastic inverter

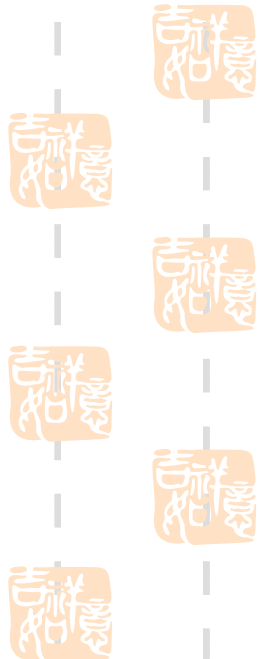
- 1. Continue power output rate: 200W
- 2. High surge power: 400W
- 3. Overload output power (3~4secs): 200W + 5%~25%
- 4. Stand-by current: 0.2A
- 5. Input DC voltage range: 11V~15VDC
- 6. Output voltage range: 117V +/- 10%
- 7. Maximum outer shell temperature: 75°C



Inverter

Model: MT031

Name: 1200W power inverter





Inverter

Model: MT032

Name: 2000W power inverter

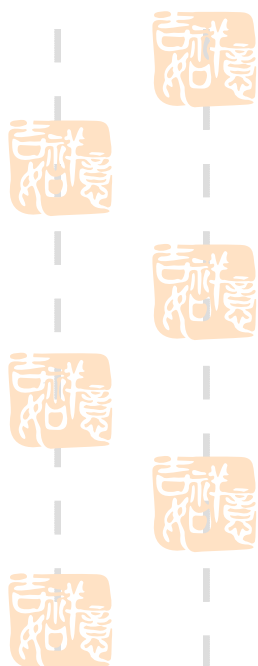




Inverter

Model: MT033

Name: 3000W power inverter





Spotlight



Model: MT006

Name: 2 M CP spotlight

- 1. 6V 4Ah SLA battery
- 2. 5" reflective cup
- 3. 6V H3 25W Blue light blub
- 4. trigger lock for on/off button
- 5. ABS housing
- 6. Battery level tester
- 7. Cold cathode tube
- 8. AC/DC charging port





Sport light



Model: MT001A

- Name: 1 M CP spotlight - cordless rechargeable
- 1. 6V3Ah SLA battery
- 2. 5" reflective cup
- 3. 6V H3 15W Blue light bulb
- 4. trigger lock for on/off button
- 5. ABS housing
- 6. AC/DC charging port



Spotlight



Model: RP3150

Name: High/Low flow
inflator

- 150 PSI
- Inflate / deflate
- With Light
- Hose management





Developing Products



Model: MT003

Name: 3 in 1 Spotlight

- 1. 12V4.5Ah SLA battery
- 2. H3 12V35W Blue light blub
- 3. 6" relective cup
- 4. Φ 19 piston compressor with 260psi pressure gauge.
- 5. 12V DC socket
- 6. ABS housing
- 7. 12V 5W light blub w/ flashing feature
- 8. triangle sign reflective
- 9. battery level tester



Developing Products



Model: MT006

Name: 3 in 1 Spotlight

- 1. 6V4Ah SLA battery
- 2. 6" reflective cup
- 3. 6V H3 35W Blue light blub
- 4. trigger lock for on/off button
- 5. ABS housing
- 6. Battery level tester
- 7. Cold cathod tube x 2
- 8. 6V5W light blub w/ flashing light
- 9.AC/DC charging port
- 10. flash light w/ flashing



Developing Products



Model: MT064

Name: 2 MCP spotlight

- 1. 6V 2.6Ah SLA battery
- 2. 6V 25W H3 blue bulb
- 3. ABS housing
- 4. 5" reflective cup
- 5. trigger lock for on/off button
- 6. battery level tester
- 7. adjustable dimmer light switch
- 8. soft rubber feeling handle
- 9. extra ratchet handle

HKbIL[®] Pest Repeller / Bug Zapper



Model: CMZ985

Name: Bug Zapper

- 1. Ultraviolet tube light
- 2. Protective safety plastic cover
- 3. On/Off switch
- 4. hanging hook/ carry handle
- 5. 6V 4.5Ah SLA battery
- 6. LED indicates power on





2008 New Products



Model: 12P-1251

Name: Jumpstarter with
Air compressor

- 260 PSI compressor
- 18A Jumpstarter
- Battery Level indicator
- Reversed priority alarm





2008 New Products



Model: 12P-1243

Name: Waterproof
Jumpstarter

- 12V Outlet
- 10A Jumpstarter
- Air tight indicator
- 95W inverter
- 1 AC outlet
- Weather Band
- Low flow inflate / deflate





2008 New Products



Model: ICH-1002

Name: I-charger

- Battery charger
- LED torch
- 12V outlet
- I-Pod charger
- USB





2008 New Products



Model: IB2001N

Name: IB2001 2nd generation

- 10Ah jumpstarter
- Emergency light
- Weather Band
- Radio
- Power Bank
- Compressor
- 90W inverter
- USB
- Battery Level Tester





2008 New Products



Model: CC2600N

Name: CC2600 2nd generation

- 100MCP light
- Power Bank
- Weather band
- Radio
- Compressor
- USB
- Battery Level Tester





2008 New Products



Model: 12P-1219

Name: Pen Pest Repeller

- LED indicator
- Pest Repeller



2008 New Products



Model: 12P-1238

Name: Storm Solution

- Radio
- Removable Torch
- LED worklight



2008 New Products



Model: 12P-1248

Name: Mini Jumpstarter

- 12V DC outlet
- USB outlet
- Jumpstarter





2008 New Products



Model: 12P-1249

Name: Jumpstarter

- 2 x 12V DC outlet
- USB outlet
- Jumpstarter
- Battery level tester





2008 New Products



Model: 12P-1218

Name: TV combo

- TV
- Light handle





2008 New Products



Model: 12P-1239

Name: Dynamo LED torch

- No battery
- 5 LED light



HKbIL[®] New Products 2008

- World class ID team for Innovative and Creative Industrial Design
- Using wide range of software for Industrial Design such as Solidwork, Pro-E, Photoshop, Illustrator and Freeha



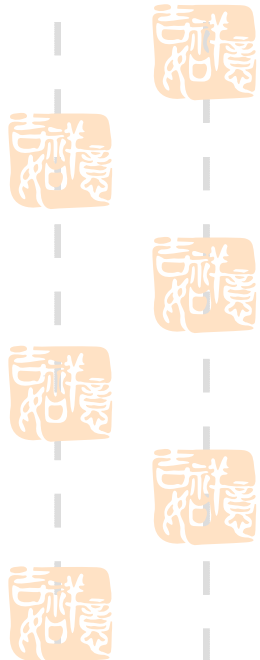


Product Category



Section II

Other OEM Projects





Other OEM Products



Model: IB3003

Name: 200W UFO Inverter

- Continue power output rate: 200W
- 225W for 20 mins
- High surge power: 400W
- 2 AC outlet with backlet LED





Other OEM Products



Model: IB3005

Name: 800W Inverter

- Continue power output rate: 800W
- High surge power: 1600W
- 2 AC outlet





Other OEM Products



Model: DG3500

Name: 1/4' Screwdriver

- Operated by 4 x AA battery



Innovated Products



Model: RP0600

Name: Inflator with cord management

- 150 PSI
- Cord management
- Hose management

HKbIL®

Power Adaptor

吉祥慶



吉祥慶

吉祥慶

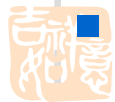


Corporate Mission 公司定位



- Section III

- To provide innovative products for a better quality of life
- Provides high quality product and lower cost for OEM/ODM/JDM Customer
- Do it right and do it right at first time.





Company Capability

公司能力



- OEM & ODM & JDM
- Tooling (Tooling Center)
- Plastic injection
- Assembly
- Vertical integration (IE, from component to finish goods)
- Industrial Design
- Mechanical and Electrical Engineering



HKbIL[®] Company Capability

公司能力

- Tooling Center



In house tooling center enable us to provide our customer with good quality of the tooling with improved lead-time and cost.

HKbIL[®] Company Capability

公司能力

- Plastic injection
- We have in house plastic injection molding units, ranging from 85T to 450 T . Able to product good range of the sizes of the plastic parts



HKbIL[®] Company Capability 公司能力



- We are vertically integrated and product many components, accessories in house.
- Such as Cable, Transformer, Power adaptors, etc..



HKbIL[®] Company Capability

公司能力

■ Assembly



Assembly
Capability, from wire
harness, cable, PCB,
system integration
and packaging



HKbIL[®] Assemble Line 装配生产流水线



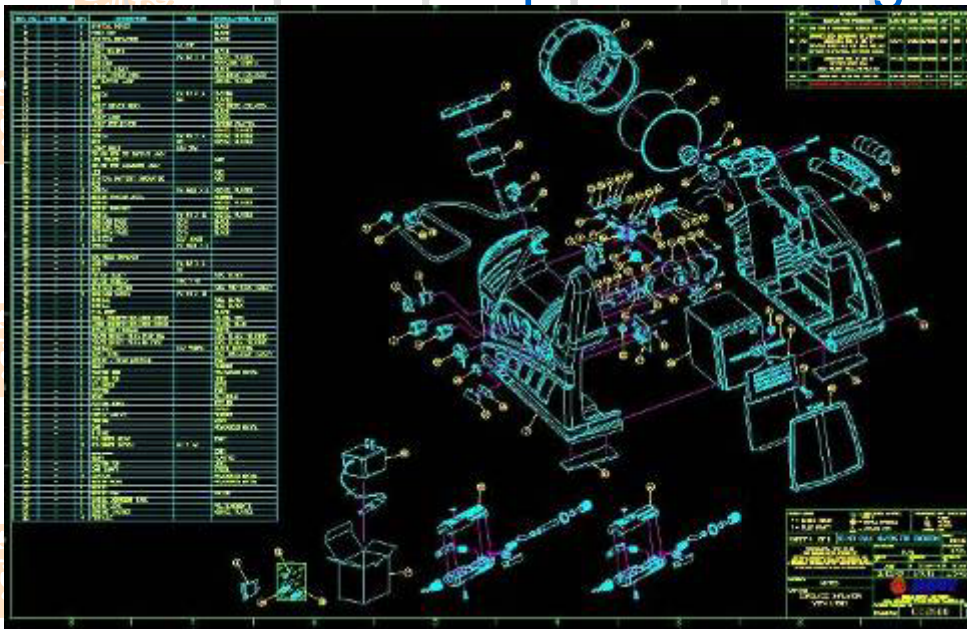
HKbIL[®] Company Capability 公司能力

- World class ID team for Innovative and Creative Industrial Design
- Using wide range of software for Industrial Design such as Solidwork, Pro-E, Photoshop, Illustrator and Freeha



HKbIL[®] Company Capability 公司能力

- Strong R&D and Product Development team
- Mechanical Engineering by using Pro-E, solidwork, and CAD.
- Electronic Engineering for power supplies, invertors, UPS, Jumpstarters, Solar system, pest repeller and other electronics product design





Laboratory 实验室

We have advanced and complete test Lab, which allows us to perform most of the regulatory pre-test in house, such as UL, cUL, CE, PSE, RoHs, SAA, ETL, CTL, etc.



Salt Spray Test



Humidity & Temperature



Bending Test



3D Projector



Flammability Test



Quality System



- **TS 16949**

We have completed and fully implemented quality standard –TS 16949, which is higher standard quality system for automotive industry

- **ISO 9001: 2000**





IQC inspection

IQC来料检验

吉祥樓



HKbIL[®] IPQC inspection IPQC检验

吉祥慶



吉祥慶

吉祥慶

吉祥慶

吉祥慶

吉祥慶

HKbIL[®] QA inspection QA检验

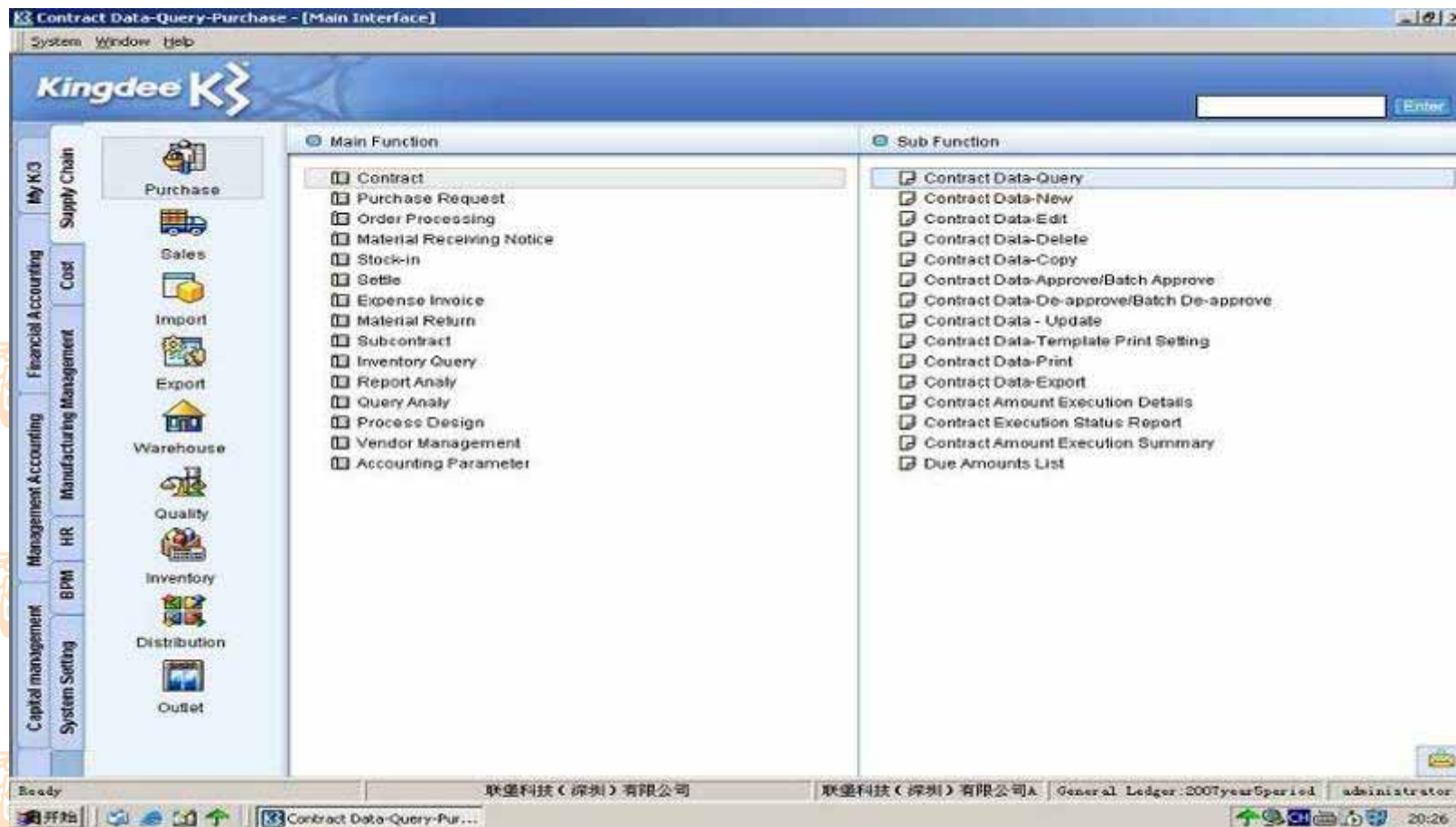
吉祥如意



吉祥如意
吉祥如意
吉祥如意
吉祥如意
吉祥如意

HKbIL[®] ERP system

ERP system for provides more accurate real time data, more efficient, and better work flow





Hong Kong Batteries Manufactory Ltd

Tel: (852) 27988548-10 lines

Fax: (852) 27980321

Email: hkbatt@netvigator.com

Web Site: www.hk-batteries.com

